



Strand7 R3.1 Setup Guide

FEBRUARY 2024

CONTENTS

Document Relevance	1
Installing Strand7.....	1
Configuring Strand7	1
Running Strand7 in Standalone Mode	1
Step 1 (Standalone) – Install HASP drivers (if not already installed)	2
Step 2 (Standalone) – Select the run mode.....	2
Step 3 (Standalone) – Obtain and enter the keycode.....	3
Running Strand7 in Network Mode.....	3
Step 1 (Network) - Install HASP drivers on licence server computer (if not already installed).....	4
Step 2 (Network) – Install licence manager on licence server computer (if not already installed).....	4
Step 3 (Network) – Select a network configuration option	4
Setting up Network Configuration A	5
Setting up Network Configuration B	7
Setting up Network Configuration C	9
Changing the Maximum Idle Time for Network Licences – HASP mode only.....	11
Running Strand7 in Cloud Mode	11
Step 1 (Cloud) – Install Strand7	11
Step 2 (Cloud) – Set the run mode.....	11
Step 3 (Cloud) – Enter the access code.....	12

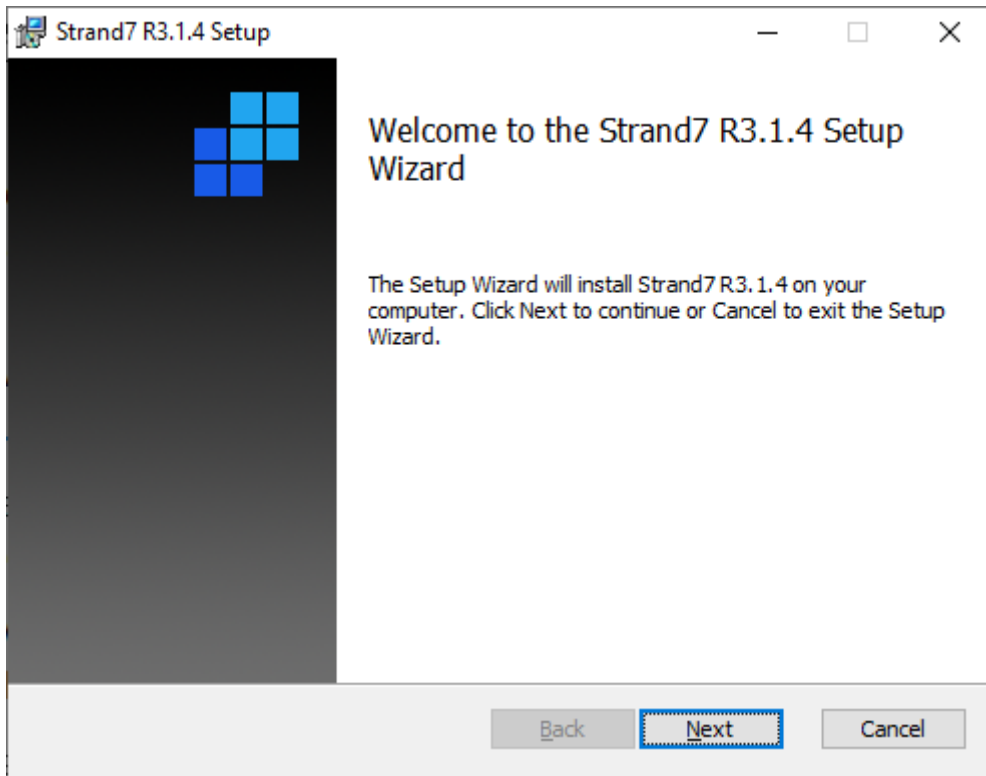
Document Relevance

This document applies to **Strand7 Release 3.1.4** (R3.1.4).

Installing Strand7

The Strand7 R3.1.4 download is issued as an MSI installation package.

Run the MSI installer to install Strand7 on a local drive. Follow the prompts to complete the installation of the software. If a previous Strand7 R3.1.x is already installed, it will be uninstalled automatically at the start of the R3.1.4 installation. The R3.1.4 installer will not uninstall R2.4.x or earlier Strand7 versions.



Configuring Strand7

After installation, Strand7 must be configured in one of the following modes before it can be run:

1. Standalone mode (requires a purple dongle).
2. Network HASP mode (requires a red dongle coded for HASP mode).
3. Network Sentinel mode (requires a red dongle coded for Sentinel mode).
4. Cloud mode (requires an access code and an Internet connection).

Running Strand7 in Standalone Mode

This mode requires a purple USB standalone dongle connected directly to the computer that will run Strand7.



Step 1 (Standalone) – Install HASP drivers (if not already installed)

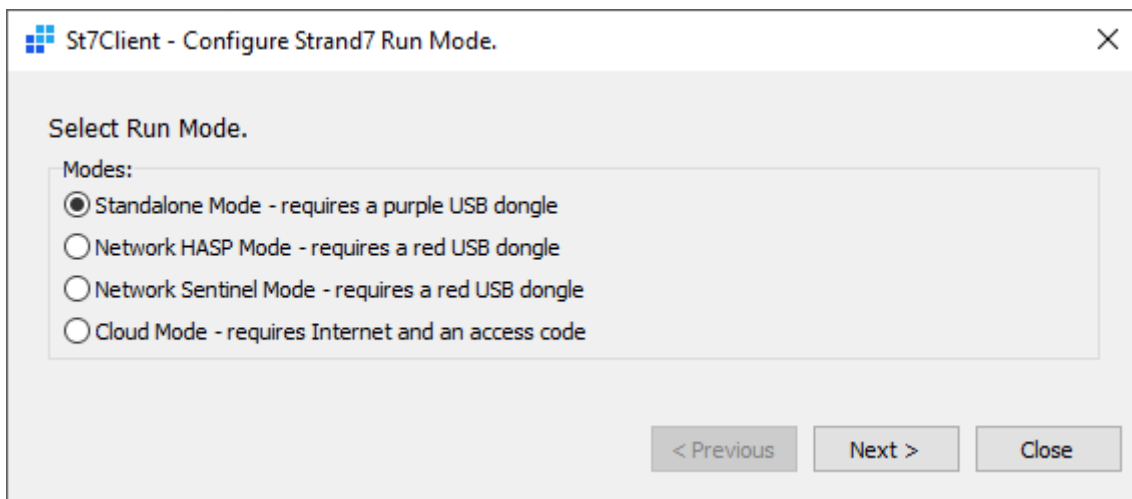
For the dongle to be recognised, drivers must first be installed. If drivers are not installed, they can be installed by downloading and installing Sentinel Runtime.

1. Do not connect the dongle yet. If it is already connected, disconnect it now.
2. Download Sentinel Runtime from the Strand7 website. The download link is found at <https://www.strand7.com/st7update>.
3. Unzip the downloaded file, run **HASPUserSetup.exe** and follow the instructions on the screen.
4. Connect the standalone dongle to the computer and wait for Windows to complete the installation of the driver. When the driver is successfully installed the dongle will light up.

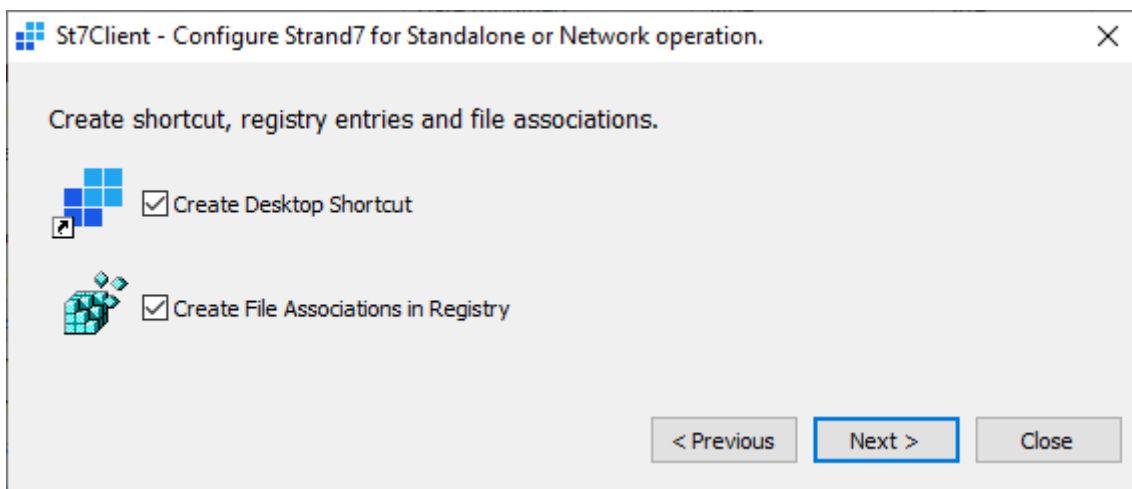
Step 2 (Standalone) – Select the run mode

If this is a new installation, this step can be skipped because, by default, Strand7 is installed in Standalone mode. To revert to Standalone mode for an installation that is currently in a different mode, execute the **St7Client.exe** program located in the Strand7 installation folder.

- Select **Standalone Mode**.



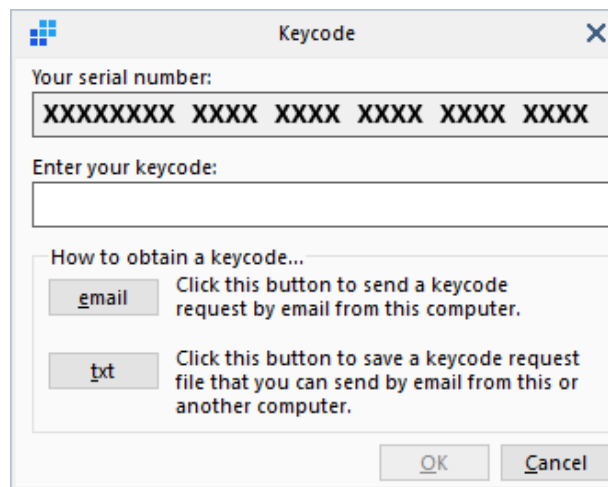
- Click **Next**.



- Set the **Create Desktop Shortcut** and **Create File Associations in Registry** options.
- Click **Next**.
- Click **Close**.

Step 3 (Standalone) – Obtain and enter the keycode

Launch Strand7 via the shortcut on the Desktop or via the shortcut in the Windows Start Menu. Strand7 will display the dialog below.

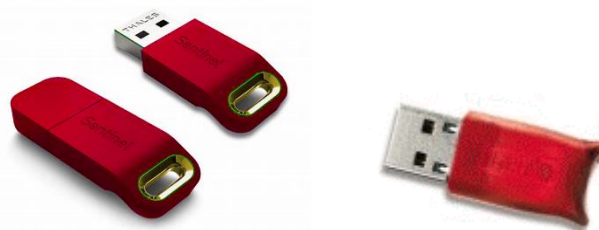


The dialog shows your unique serial number and a text box to enter your keycode. If your computer has email, you can click the **email** button, which will automatically create an email with all the required information, ready for you to send for the request of a keycode. Do not edit this email, just send it as is. Alternatively, click the **txt** button to save the keycode request to a text file. Send this text file as an attachment to the email address indicated in the file.

You will receive your keycode by reply email. Once you have a keycode, enter it into the dialog shown above and click OK. Note that keycodes are specific to the computer that generated the serial number. You can use another computer to send the keycode request email with the txt option, but the serial number must be from the computer on which Strand7 is to run.

Running Strand7 in Network Mode

This mode requires a red USB network dongle connected to a server computer that is running the appropriate licence manager service. The licence manager service required for a given network dongle depends on the how the dongle has been coded.



There are two coding options for a network dongle: **HASP** mode and **Sentinel** mode.

1. HASP mode is the original mode of the HASP dongles. In HASP mode, network licences are managed by the HASP Loader Licence Manager, which runs as a 32-bit service supporting IPv4 protocol only.
2. In Sentinel mode, licences are managed by the Sentinel LDK License Manager. This comes with a web interface (the Sentinel Admin Control Center), accessible on the server computer via <http://localhost:1947/>. Sentinel mode supports IPv6 protocol, offers increased security and provides greater flexibility in managing and monitoring network licences.

A network dongle, depending on the type, may be coded to run in either mode by executing the application contained in the following Strand7 Webnote: [ST7-R3.60.00.1 Updating Hardware Locks to Sentinel Mode](#) (the application can also be used to check the current coding of a network dongle). A login account is needed to download this Webnote. Contact us via info@strand7.com for more information.

Step 1 (Network) - Install HASP drivers on licence server computer (if not already installed)

For the dongle to be recognised by the licence server computer, drivers must first be installed on the server. If drivers are not installed, they can be installed by downloading and installing Sentinel Runtime.

1. Do not connect the dongle yet. If it is already connected, disconnect it now.
2. Download Sentinel Runtime from the Strand7 website. The download link is found at <https://www.strand7.com/st7update>.
3. Unzip the downloaded file, run **HASPUserSetup.exe** and follow the instructions on the screen.
4. Connect the network dongle to the computer and wait for Windows to complete the installation of the driver. When the driver is successfully installed the dongle will light up.

Step 2 (Network) – Install licence manager on licence server computer (if not already installed)

HASP Mode

In HASP mode, Strand7 uses the HASP Loader Licence Manager for managing network licences. The licence manager runs as a service and must be installed on a server computer that is network accessible from all client computers running Strand7.

1. Download Aladdin HASP Licence Manager from the Strand7 website. The download link is found at <https://www.strand7.com/st7update>.
2. Unzip the downloaded file, run **lmsetup.exe** and follow the instructions on the screen. Select **install as a service** when prompted.
3. Open Control Panel/Administrative Tools/Services and check that the **HASP Loader** service is running.

The licence manager installer will create two inbound firewall rules named **HASP LM** in Windows Firewall. These are for inbound connections on TCP port 475 and UDP port 475. Strand7 accesses the licence server on UDP port 475.

Sentinel Mode

In Sentinel mode, Strand7 uses Sentinel LDK License Manager, which is automatically installed as part of the HASP driver installation in **Step 1**, above.

1. Open Control Panel/Administrative Tools/Services and check that the **Sentinel LDK License Manager** service is running.

Step 3 (Network) – Select a network configuration option

There are three configurations available for running Strand7 in network mode. In all three configurations, Strand7 obtains a licence from the licence server computer that is running the licence manager. The difference between the three configurations is in where the client finds the Strand7 executable and the activation keycode.

Network Configuration A

Strand7 is installed only on a shared network drive. Each client computer runs Strand7 directly from the shared network drive (execution of Strand7 still takes place on the client computer). Installation and configuration are performed only once. A single keycode stored on the shared network drive activates Strand7 for all client computers. The advantage of this option is the simplicity in setting up a client.

Network Configuration B

Strand7 is installed on both a shared network drive and on the local drive of each client computer. Although the client computer will be able to run Strand7 from the shared network drive (as in configuration A), the main purpose of configuration B is to enable the client computer to run Strand7 from the local drive – the advantage of this is that it will reduce the time to load Strand7 every time it is run. The installation on the local drive is configured so that it uses the keycode on the shared network drive, therefore only one keycode is required for all client installations.

Network Configuration C

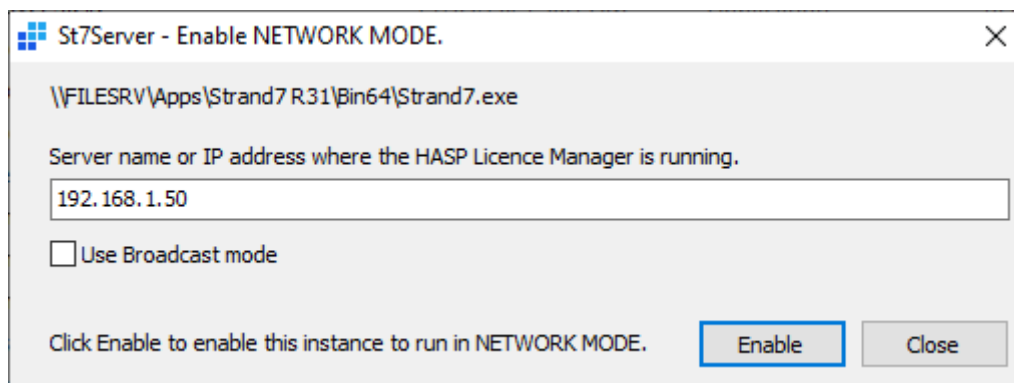
Strand7 is installed only on the local drive of each client computer. Installation and configuration must be performed on each client computer. Each client computer will require its own keycode to activate Strand7. The advantage of this configuration compared with the other two is that client installations do not need access to the shared network drive.

Setting up Network Configuration A

Strand7 is installed on a shared network drive. Each client computer runs Strand7 directly from the shared network drive. Installation and configuration are performed only once. A single keycode activates Strand7 for all client computers.

The Strand7 installer does not allow installation to a shared network drive. However, it is possible to do this manually by first installing to a local drive and then copying the installed files to the shared network drive.

1. Install Strand7 to the default location; usually this is "C:\Program Files\Strand7 R31".
2. Create a folder for Strand7 on your shared network drive, say "\\FILESRV\Apps\Strand7 R31".
3. Copy the folders inside "C:\Program Files\Strand7 R31" to "\\FILESRV\Apps\Strand7 R31". Do not copy the shortcuts as they will not be valid.
4. Copy the folders inside "C:\ProgramData\Strand7 R31" to "\\FILESRV\Apps\Strand7 R31". The locally installed Strand7 can now be uninstalled if preferred.
5. Run the "\\FILESRV\Apps\Strand7 R31\Bin64\St7Server.exe" program located on the shared network drive.

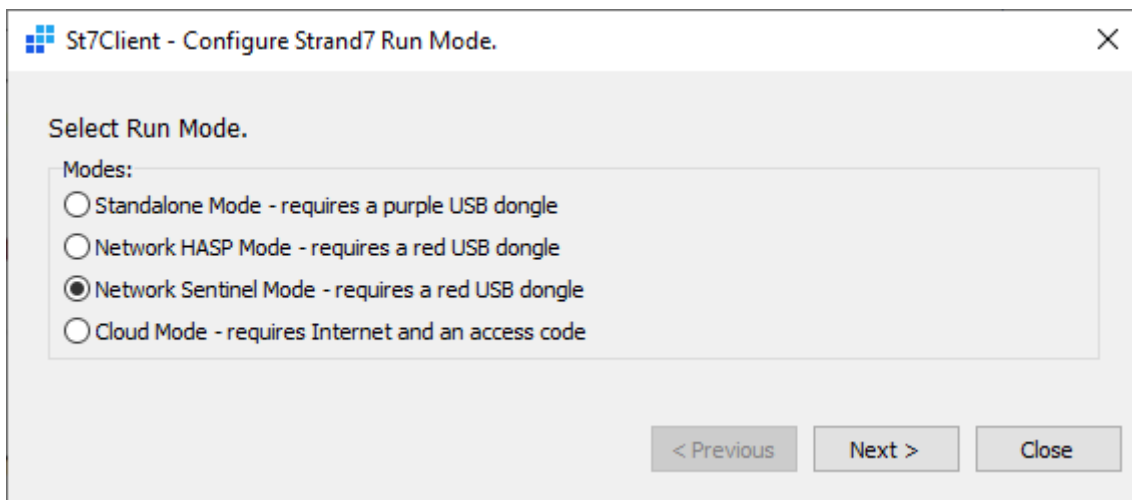
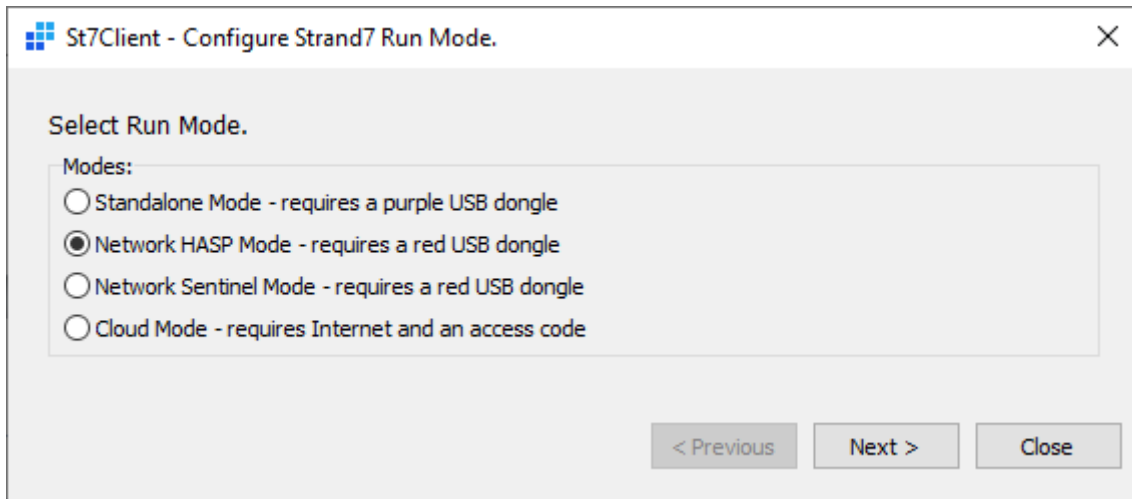


- Specify the name or IP address of the computer on which the licence server is running.
- Clear the **Use Broadcast mode** option.
- Click **Enable**.

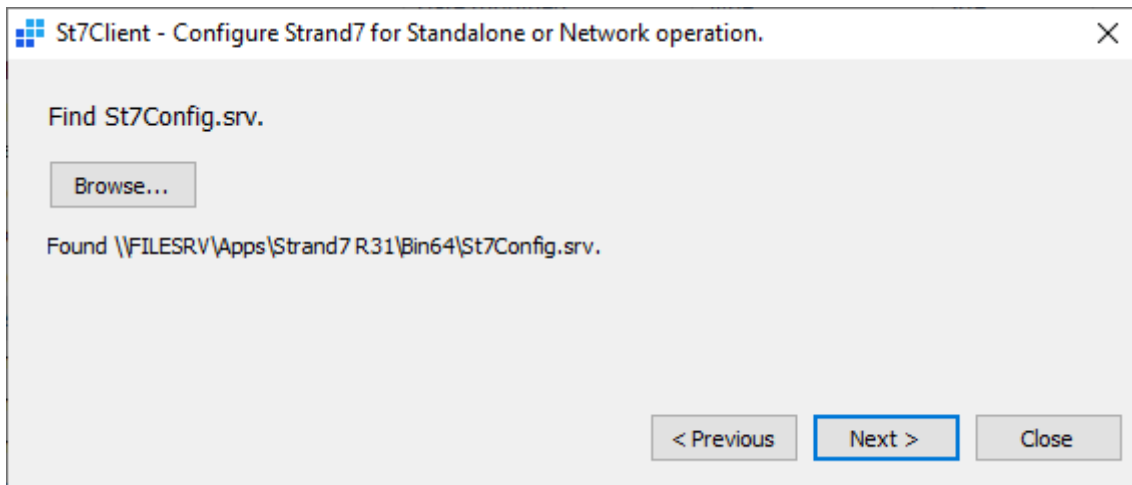
If the server address is not known, you may leave the server name field blank and select the **Use Broadcast mode** option. Specifying the address of the licence server is preferable to the **Use Broadcast mode** option, which may not work on all local area networks or when using VPN.

This step creates various configuration files in the "\\FILESRV\Apps\Strand7 R31\Bin64\" folder, including the file St7Config.srv, which is required in the next step.

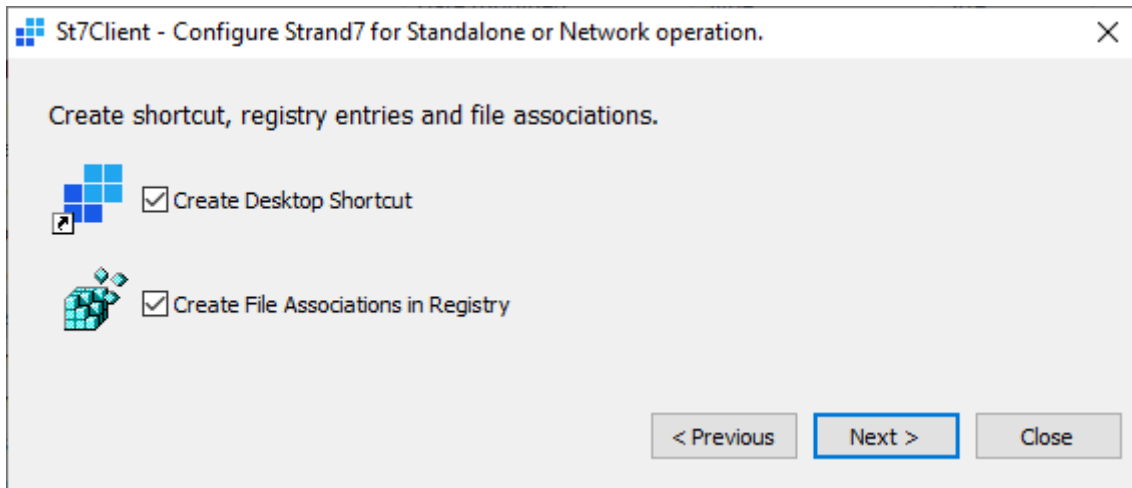
6. Run the "\\FILESRV\Apps\Strand7 R31\Bin64\St7Client.exe" program located on the shared network drive.



- Select one of the two network modes: either **Network HASP Mode** or **Network Sentinel Mode**, depending on how your network dongle is coded (see [Running Strand7 in Network Mode](#) above).
- Click **Next**.



- Click **Browse...** and locate the “\\FILESRV\Apps\Strand7 R31\Bin64\St7Config.srv” file which was created in Step 5.
- Click **Next**.



- Set the **Create Desktop Shortcut** and **Create File Associations in Registry** options.
- Click **Next**.
- Click **Close**.

7. Run “\\FILESRV\Apps\Strand7 R31\Bin64\Strand7.exe” on the shared network drive.

8. To activate Strand7, a keycode now needs to be entered. Obtain a keycode using the same procedure described in the **Step 3 (Standalone) – Obtain and enter the keycode** section described above.

Strand7 is now set up to run from any client computer that has access to the shared network drive. A keycode is not required on the client computers.

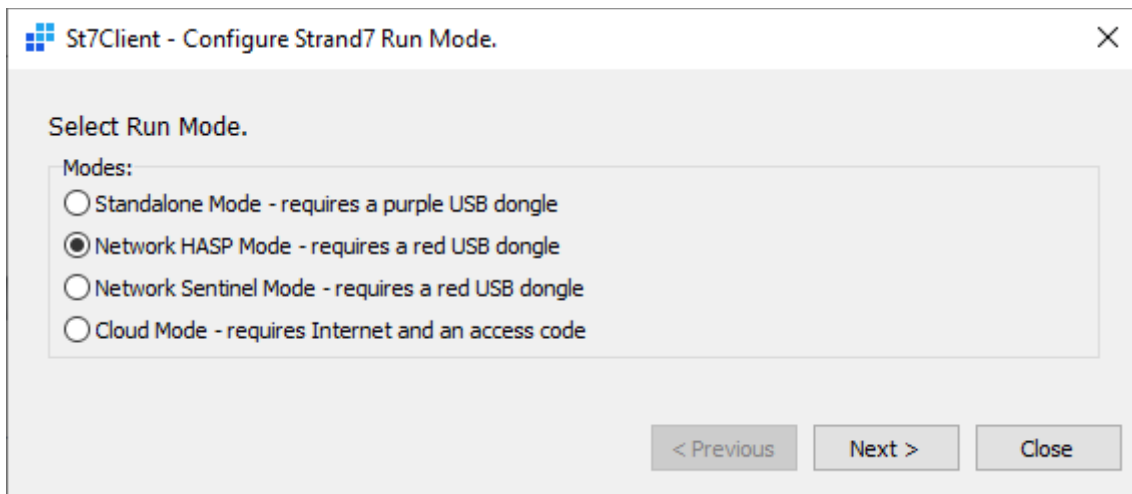
Setting up Network Configuration B

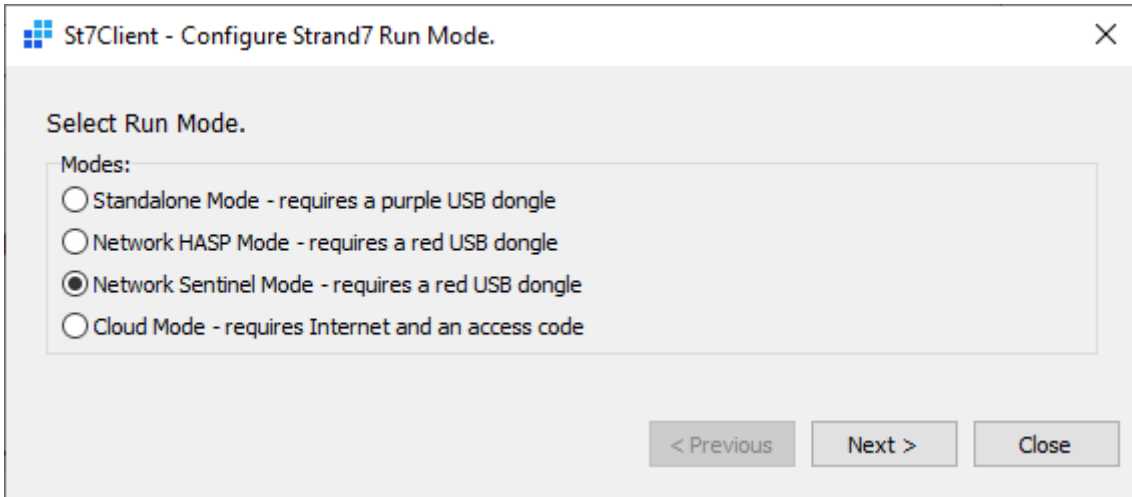
Strand7 is installed on both a shared network drive and on the local drive of each client computer. Each client computer will generally run Strand7 from the local drive. The installation on the local drive is configured so that it uses the keycode on the shared network drive. Only one keycode is required for all installations.

1. Install and configure Strand7 on a shared network drive by following the instructions for **Setting up Network Configuration A**. Complete all steps and test that Strand7 runs successfully on the server computer before proceeding.

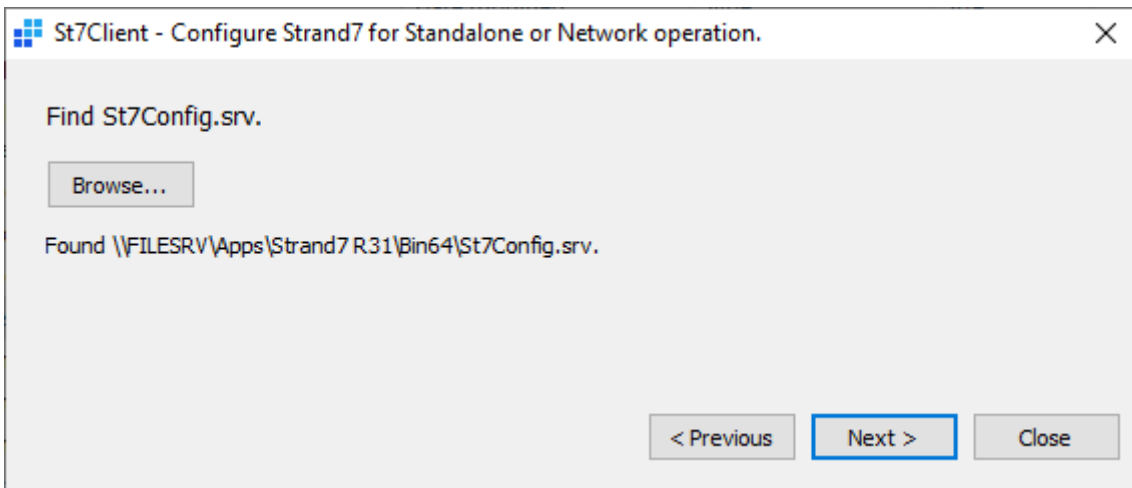
On each client computer:

2. Install Strand7 on the client computer.
3. Run the “C:\Program Files\Strand7 R31\Bin64\St7Client.exe” program located on the client computer.

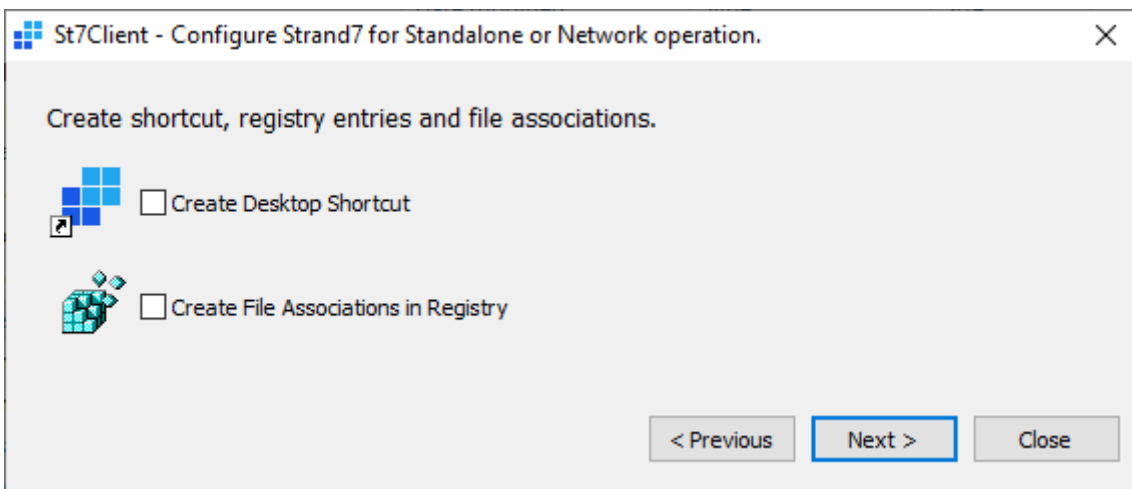




- Select one of the two network modes: either **Network HASP Mode** or **Network Sentinel Mode**, depending on how your network dongle is coded (see [Running Strand7 in Network Mode](#) above).



- Click **Browse...** and locate the “\\FILESRV\Apps\Strand7 R31\Bin64\St7Config.srv” file which belongs to the shared network installation.
- Click **Next**.



- Clear the **Create Desktop Shortcut** and **Create File Associations in Registry** options as they were already created by the installer in Step 2.
- Click **Next**.

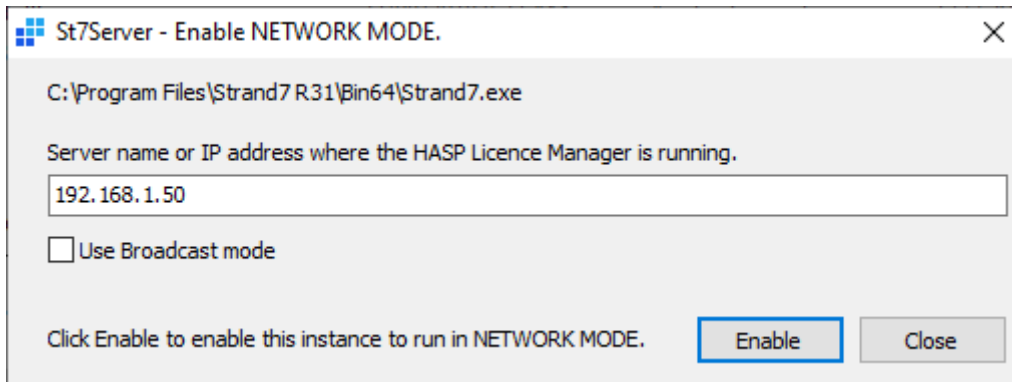
- Click **Close**.

Strand7 is now set up to run from the client computer. A keycode is not required on the client computer.

Setting up Network Configuration C

Strand7 is installed only on the local drive of each client computer. Installation and configuration must be performed on each client computer. Each client computer will require a separate keycode to activate Strand7.

1. Install Strand7 on the client computer.
2. Run the “C:\Program Files\Strand7 R31\Bin64\St7Server.exe” program located on the client computer.

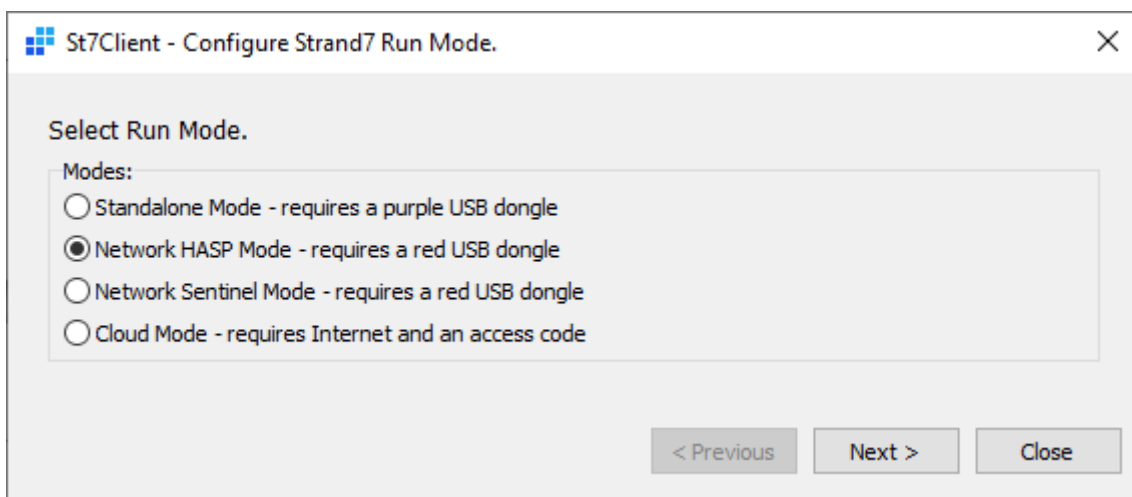


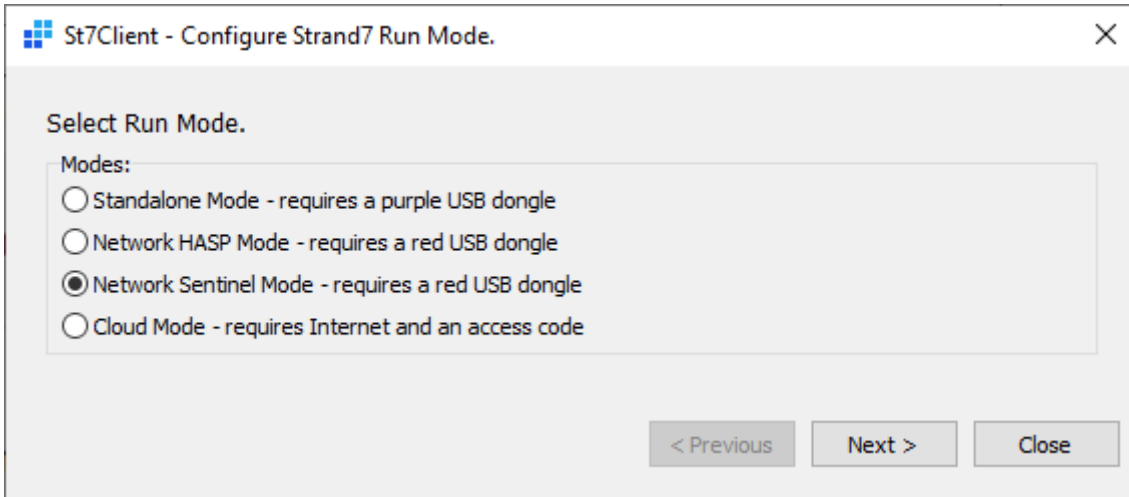
- Specify the server name or IP address of the licence server.
- Clear the **Use Broadcast mode** option.
- Click **Enable**.

If the server address is not known, you may leave the server name field blank and select the **Use Broadcast mode** option. Specifying the address of the licence server is preferable to the **Use Broadcast mode** option, which may not work on all local area networks or when using VPN.

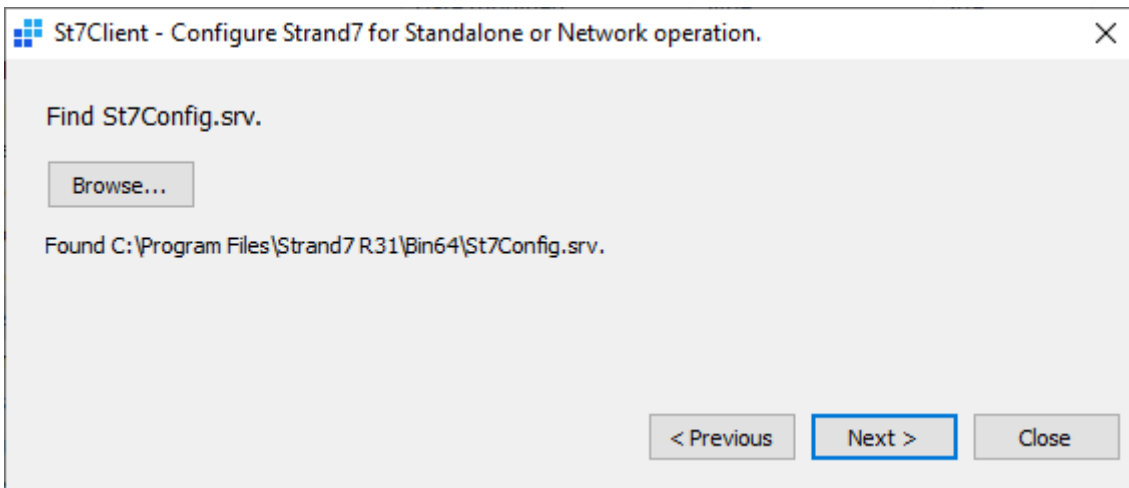
This step creates various configuration files in the “C:\Program Files\Strand7 R31\Bin64\” folder, including the file St7Config.srv, which is required in the next step.

3. Run the “C:\Program Files\Strand7 R31\Bin64\St7Client.exe” program located on the client computer.

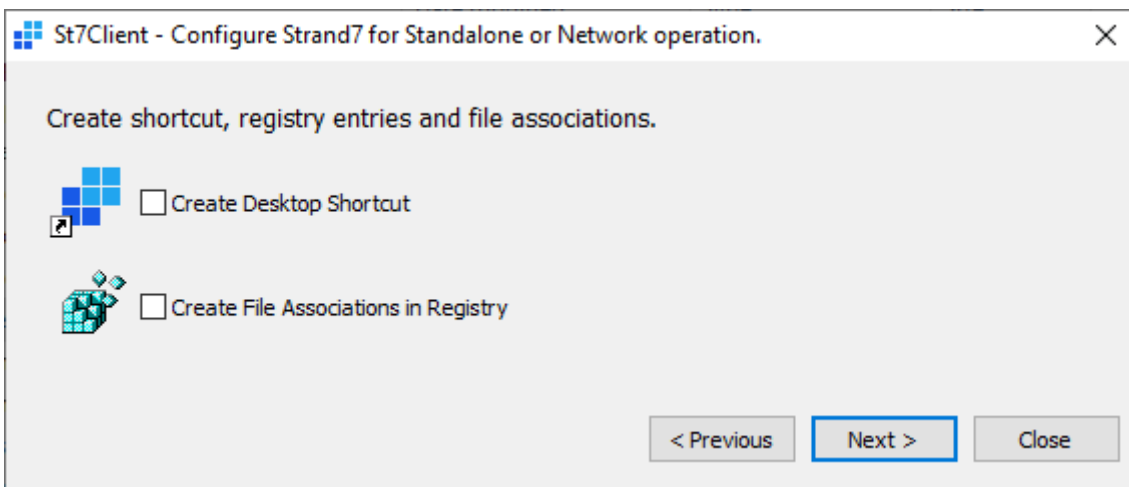




- Select one of the two network modes: either **Network HASP Mode** or **Network Sentinel Mode**, depending on how your network dongle is coded (see [Running Strand7 in Network Mode](#) above).



- Click **Browse...** and locate the “C:\Program Files\Strand7 R31\Bin64\St7Config.srv” file which was created in Step 2.
- Click **Next**.



- Clear the **Create Desktop Shortcut** and **Create File Associations in Registry** options as they were already created by the installer in Step 1.
- Click **Next**.

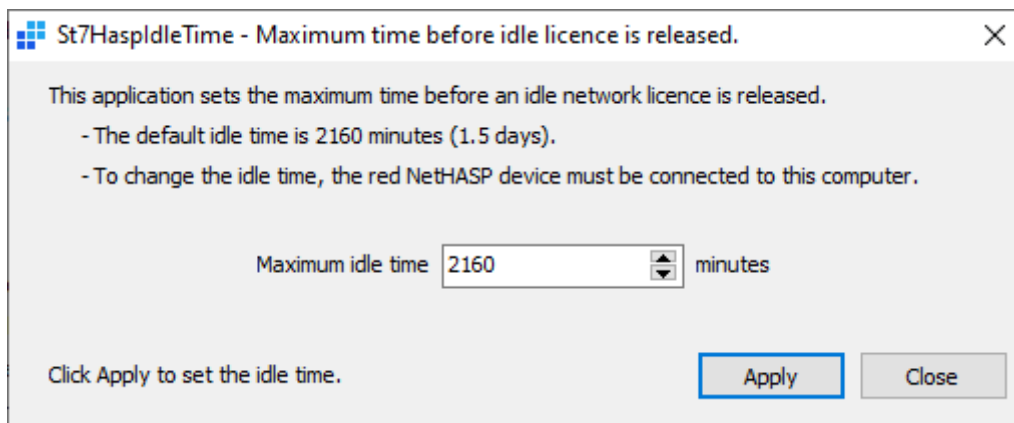
- Click **Close**.
4. To activate Strand7, a keycode now needs to be entered. Obtain a keycode using the same procedure described in the **Step 3 (Standalone) – Obtain and enter the keycode** section described above.

Changing the Maximum Idle Time for Network Licences – HASP mode only

If Strand7 terminates abnormally, or the network connection to the licence server is interrupted, a licence seat may be lost. The licence seat is then no longer in use but the licence manager holds it in reserve for the computer that was using it. The licence manager will release a held licence seat, making it available to other users after a specified period of inactivity (the maximum idle time).

The default maximum idle time for a licence seat is 1.5 days. A tool is provided to allow this value to be changed. Note that setting the maximum idle time too low may cause problems for users who are actively using a licence, as their licence could be released and then allocated to another user once the number of licence seats has been exhausted.

1. On the licence server computer with the network dongle attached, run the **St7HaspldIdleTime.exe** program. For a default installation this is located in “C:\Program Files\Strand7 R31\Bin64\”.



- Set the desired **Maximum idle time** and click **Apply**.

Running Strand7 in Cloud Mode

This mode, if available to you, requires an access code and an Internet connection, but no dongle.

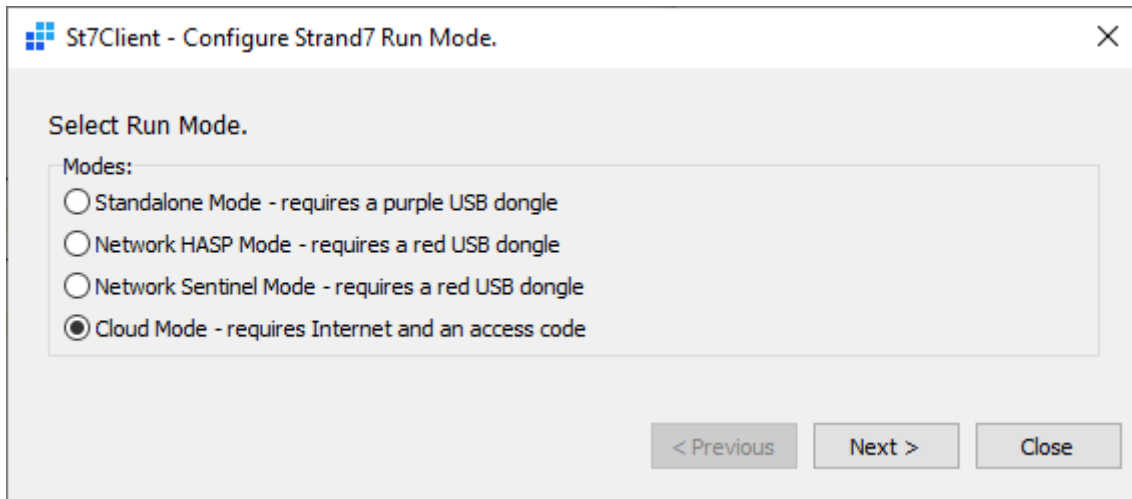
Step 1 (Cloud) – Install Strand7

Install Strand7 to the default location; this is usually “C:\Program Files\Strand7 R31” (see [Installing Strand7](#) above).

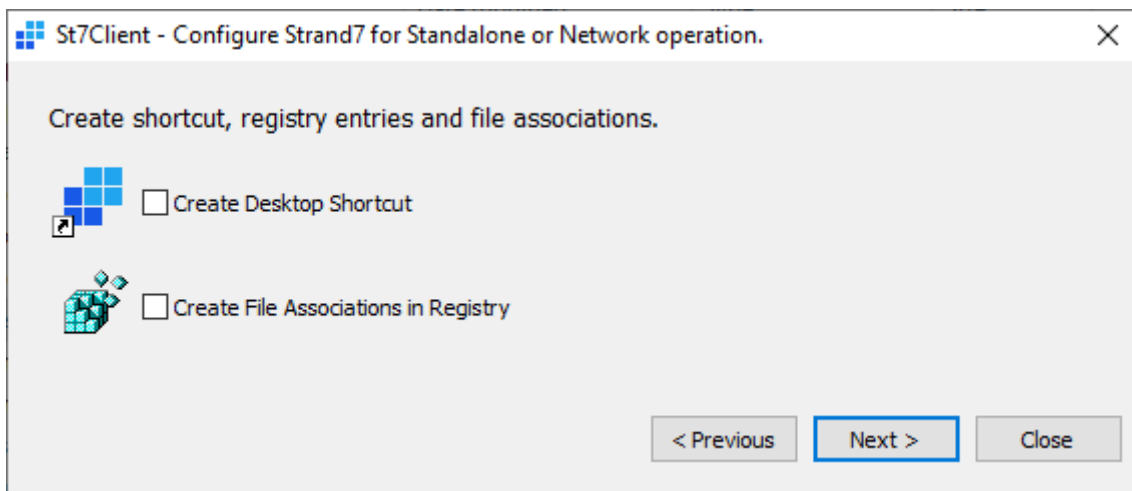
Step 2 (Cloud) – Set the run mode

Execute the “C:\Program Files\Strand7 R31\Bin64\St7Client.exe” program on the client computer.

- Select **Cloud Mode**.



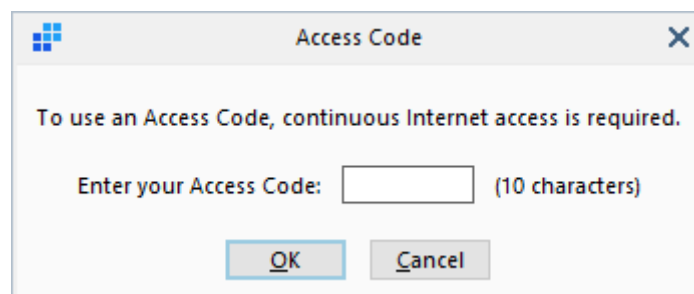
- Click **Next**.



- Clear the **Create Desktop Shortcut** and **Create File Associations in Registry** options as they were already created by the installer in Step 1.
- Click **Next**.
- Click **Close**.

Step 3 (Cloud) – Enter the access code

Run Strand7 via the shortcut on the Desktop, or via the shortcut in the Windows Start Menu. Strand7 will display the dialog below.



Enter your access code in the edit box to activate Strand7. If you do not have an access code and are interested in running Strand7 in cloud mode, contact us via info@strand7.com for more information.